

- NOTES**
- 1) FOUNDATION PLAN IS SUPPLIED FOR "FOOTPRINT" DIMENSIONS ONLY ALL STRUCTURAL DESIGN AND CONSTRUCTION OF FOUNDATION SHALL BE BY OTHERS, IN COMPLIANCE WITH THE REQUIREMENTS OF LOCAL SITE CONDITIONS AND ALL APPLICABLE STATE AND LOCAL BUILDING CODES.
 - 2) INTERMEDIATE (LALLY) COLUMN SPRINGS SUPPLIED FOR LOCATION ONLY COMPRESSIVE STRENGTH, SIZE AND MATERIAL SHALL BE DESIGNED BY OTHERS
 - 3) CONTRACTOR IS RESPONSIBLE TO ASSURE THAT ALL FOOTINGS ARE ON UNDISTURBED SOIL AND BELOW THE FROST LINE
 - 4) FOR HOUSES INSTALLED ON A "CRAWLSPACE" STRUCTURAL, ACCESS, AND VENTILATION BY OTHERS IN COMPLIANCE WITH STATE CODES
 - 5) PROVISION OF REQUIRED NATURAL LIGHT AND VENTILATION IN SUITABLE OPENINGS SHALL BE BY OTHERS. COORDINATION OF ALL FOUNDATION ELEMENTS WITH PLANNED PLUMBING STACKS, ELECTRICAL DROPS, ENTRANCES AND DECKS
 - 6) CONTRACTOR SHALL PROVIDE RECEPTILES AND OR JUNCTION BOXES IN BASEMENT FOR ELECTRIC HOT WATER HEATER, WASHER, DRYER, AND GROUND FAULT PER APPLICABLE CODES
 - 7) ALL REQUIRED SMOKE DETECTORS FOR BASEMENT SHALL BE PROVIDED, INSTALLATION BY OTHERS
 - 8) X - DIMENSIONS ARE APPROXIMATE.

P. F. S. CORPORATION

Plans certified to comply with all applicable codes and regulations c1.
MA. BLDG. CODES
2 8, 1989

R. WENNER STAFF ENG.
Date _____
Title _____

SHEET TITLE: SUGGESTED FOUNDATION PLAN AND TYPICAL DETAILS

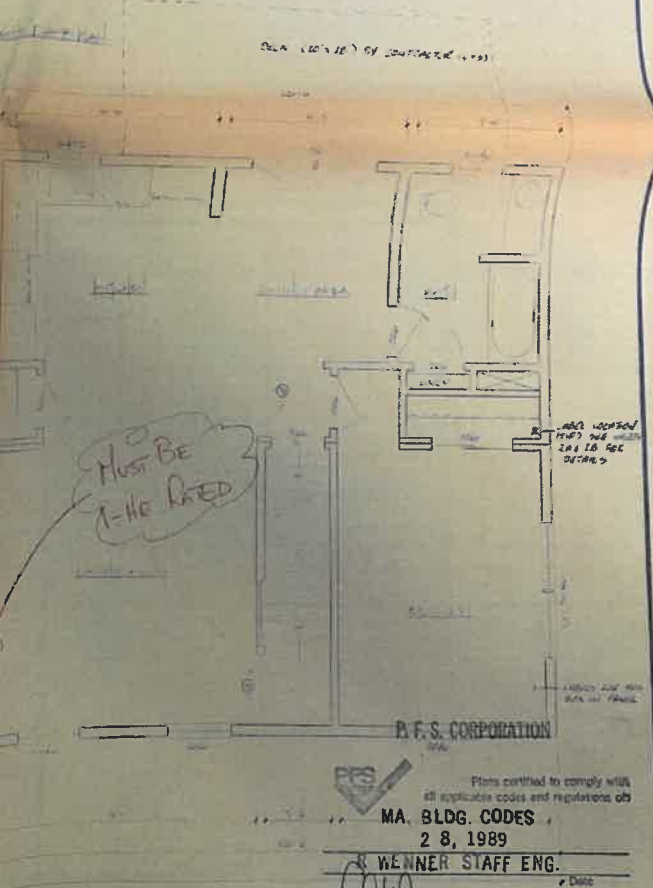
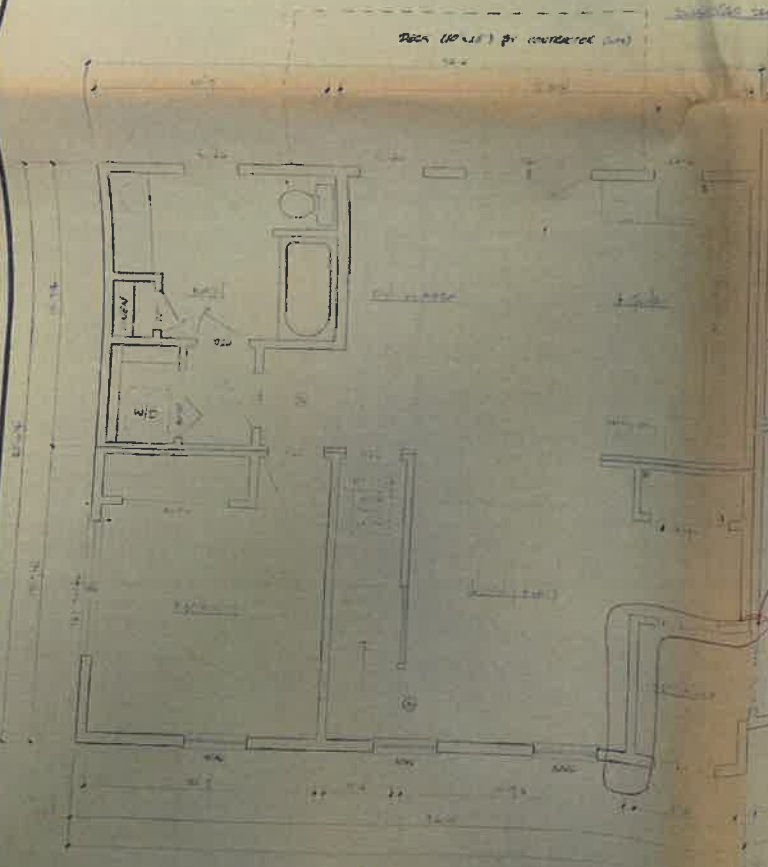
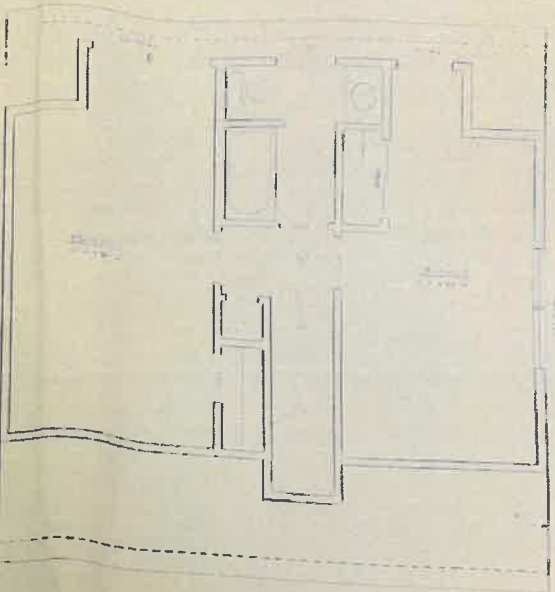
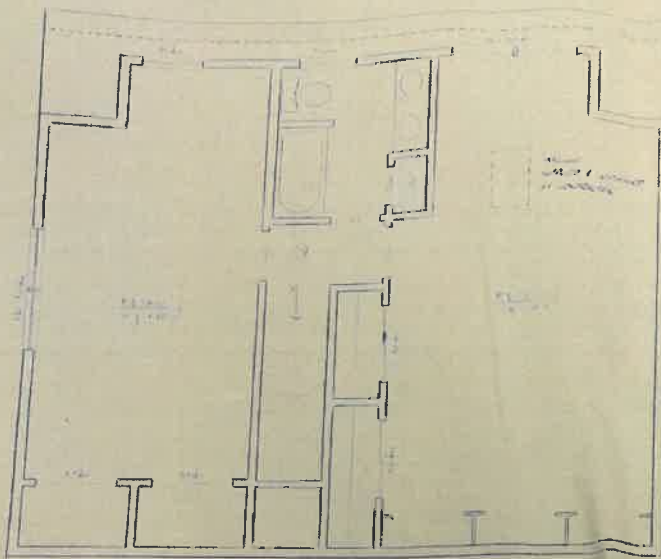
DRAWN BY: _____	SCALE: AS NOTED	SHEET NO. 3
DATE: _____	APPROVED BY: _____	DRAWING NO.: _____
DATE: _____		

KEY-LOC HOMES

P.O. BOX 226
SUNCOOK, NH 03276

REVISIONS	DATE	REVISION	BY	APPC





MUST BE
1-HR RATED

ALL WORK
TO BE
DONE

P.F.S. CORPORATION



Plans certified to comply with all applicable codes and regulations of

MA. BLDG. CODES

28, 1989

WENNER STAFF ENG.

[Signature]

Date

DATE	REVISION	BY	APPD



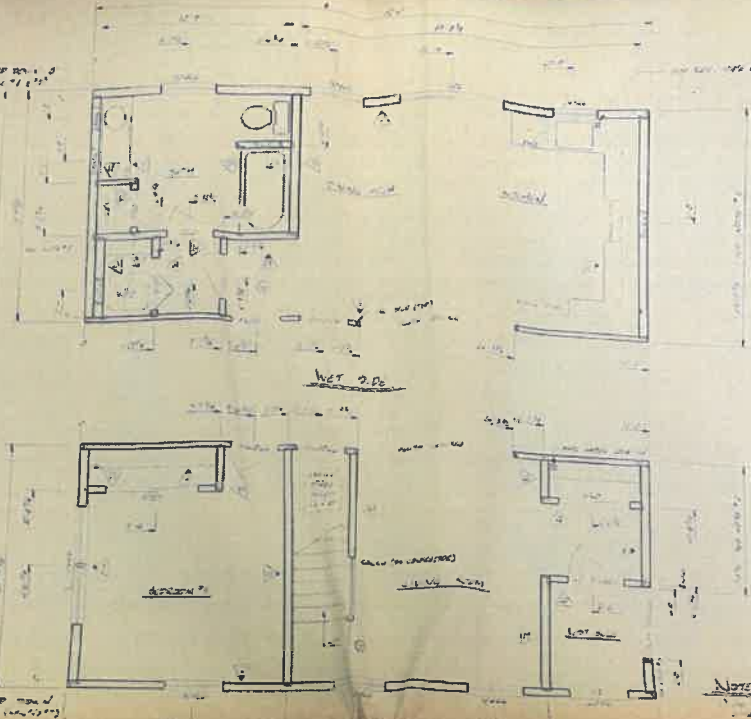
KEY-LOC HOMES

P.O. BOX 826
SUNCOOK, NH 03275

SHEET TITLE: <i>SHED, CAFE, OFFICE</i>		
<i>1st & 2nd floor plans</i>		
DRAWN BY: <i>[Signature]</i>	SCALE: 1/8" = 1'-0"	SHEET NO.
DATE: <i>11-20-89</i>	APPROVED BY:	DRAWING NO.:
DATE:		2



NOT TO SCALE
 1/4" = 1'-0" (VERTICAL)
 1/8" = 1'-0" (HORIZONTAL)



NOT TO SCALE
 1/4" = 1'-0" (VERTICAL)
 1/8" = 1'-0" (HORIZONTAL)

Notes

1. ALL FINISHES TO BE AS SHOWN ON THIS PLAN.
2. ALL WALLS TO BE 5/8" GYPSUM BOARD ON STUDS.
3. ALL FLOORS TO BE 1/2" GYPSUM BOARD ON JOISTS.
4. ALL CEILING TO BE 5/8" GYPSUM BOARD ON JOISTS.
5. ALL DOORS TO BE 1 3/4" SOLID CORE.
6. ALL WINDOWS TO BE 1 3/4" DOUBLE GLAZED.
7. ALL LIGHT FIXTURES TO BE AS SHOWN ON THIS PLAN.
8. ALL ELECTRICAL TO BE AS SHOWN ON THIS PLAN.
9. ALL PLUMBING TO BE AS SHOWN ON THIS PLAN.
10. ALL MECHANICAL TO BE AS SHOWN ON THIS PLAN.

INTERIOR FINISHES-LIGHT & VENT					
ROOM	FLOORS	WALLS	AREA	LIGHT	VENT
LIVING RM.			110	210	12
DINING RM.					
FOYER			30		
HALL					
MSTR. BDRM.			120	250	10
BEDROOM 2			110	200	10
BEDROOM 3			100	180	10
BEDROOM 4					
KITCHEN			100	180	10
MAIN BATH			80	150	10
MSTR. BATH			60	120	10

EXTERIOR FINISHES			
ITEM	MATERIAL	COLOR	REMARKS
SIDING			
SHUTTERS			STD. ON FRONT ONLY
ROOFING			
<input type="checkbox"/> 8" GABLE END OVERHANGS			
HEAT			
<input type="checkbox"/> ELECTRIC BASEBOARD <input checked="" type="checkbox"/> HOT WATER HEAT			
<input type="checkbox"/> NO HEAT			
<input type="checkbox"/> OBT. 20" X 20" CHIMNEY FRAMING			
<input type="checkbox"/> FIREPLACE FRAMING			

WINDOW/DOOR SCHEDULE				
WINDOW NO.	TYPE	MATERIAL	R.O.	SUB-ASSY.
1	6/0	1 3/4" DOUBLE GLAZED	12/12	12/12
2	6/0	1 3/4" DOUBLE GLAZED	12/12	12/12
3	6/0	1 3/4" DOUBLE GLAZED	12/12	12/12
4	6/0	1 3/4" DOUBLE GLAZED	12/12	12/12
5	6/0	1 3/4" DOUBLE GLAZED	12/12	12/12
6	6/0	1 3/4" DOUBLE GLAZED	12/12	12/12
7	6/0	1 3/4" DOUBLE GLAZED	12/12	12/12
8	6/0	1 3/4" DOUBLE GLAZED	12/12	12/12
9	6/0	1 3/4" DOUBLE GLAZED	12/12	12/12
10	6/0	1 3/4" DOUBLE GLAZED	12/12	12/12
11	6/0	1 3/4" DOUBLE GLAZED	12/12	12/12
12	6/0	1 3/4" DOUBLE GLAZED	12/12	12/12
13	6/0	1 3/4" DOUBLE GLAZED	12/12	12/12
14	6/0	1 3/4" DOUBLE GLAZED	12/12	12/12
15	6/0	1 3/4" DOUBLE GLAZED	12/12	12/12
16	6/0	1 3/4" DOUBLE GLAZED	12/12	12/12
17	6/0	1 3/4" DOUBLE GLAZED	12/12	12/12
18	6/0	1 3/4" DOUBLE GLAZED	12/12	12/12
19	6/0	1 3/4" DOUBLE GLAZED	12/12	12/12
20	6/0	1 3/4" DOUBLE GLAZED	12/12	12/12
21	6/0	1 3/4" DOUBLE GLAZED	12/12	12/12
22	6/0	1 3/4" DOUBLE GLAZED	12/12	12/12
23	6/0	1 3/4" DOUBLE GLAZED	12/12	12/12
24	6/0	1 3/4" DOUBLE GLAZED	12/12	12/12

WALL SCHEDULE		
NO.	SIZE	REMARKS
1	12/12	
2	12/12	
3	12/12	
4	12/12	
5	12/12	
6	12/12	
7	12/12	
8	12/12	
9	12/12	
10	12/12	
11	12/12	
12	12/12	
13	12/12	
14	12/12	
15	12/12	
16	12/12	
17	12/12	
18	12/12	
19	12/12	
20	12/12	
21	12/12	
22	12/12	
23	12/12	
24	12/12	

* ROOMS W/MECH LIGHT & VENT NOT INCLUDED

KITCHEN AND BATHROOMS			
ROOM	CABINETS	COUNTER	FIXTURES
KITCHEN			
MAIN BATH			
MSTR. BATH			

ELECTRICAL	
<input type="checkbox"/> STD. PANEL LOCATION	<input type="checkbox"/> REVERSE DROP
<input checked="" type="checkbox"/> SPECIAL PANEL LOCATION	
PLUMBING	
<input type="checkbox"/> STD. MATERIALS	<input type="checkbox"/> SPECIAL INSTRUCTIONS
<input type="checkbox"/> OBT. SARGE DISPOSAL	<input type="checkbox"/> WASHER/DRYER HOOK-UP

INTERIOR OPTIONS	
<input type="checkbox"/> DELUX. MED. CAB.	<input type="checkbox"/> OPENING FOR DISHWASHER
<input type="checkbox"/> TUB ENCL.	<input type="checkbox"/> RANGE HOOD/COLOR
<input type="checkbox"/> SHOWER ENCL.	<input type="checkbox"/> EXTRA WALLPAPER
<input type="checkbox"/> 6 PANEL DOORS	<input type="checkbox"/> BUILT IN VACUUM SYSTEM

DEALER: P.F.S. CORPORATION
 SALES NO: 88109
 TURKEY BUYER: [Signature]
 STATE: MA
 HOUSE NUMBER: 88109 MA

P.F.S. CORPORATION

Plans certified to comply with all applicable codes and regulations of MA. BLDG. CODES 2 8, 1989

R. WENNER STAFF ENG.
 Date: [Signature]

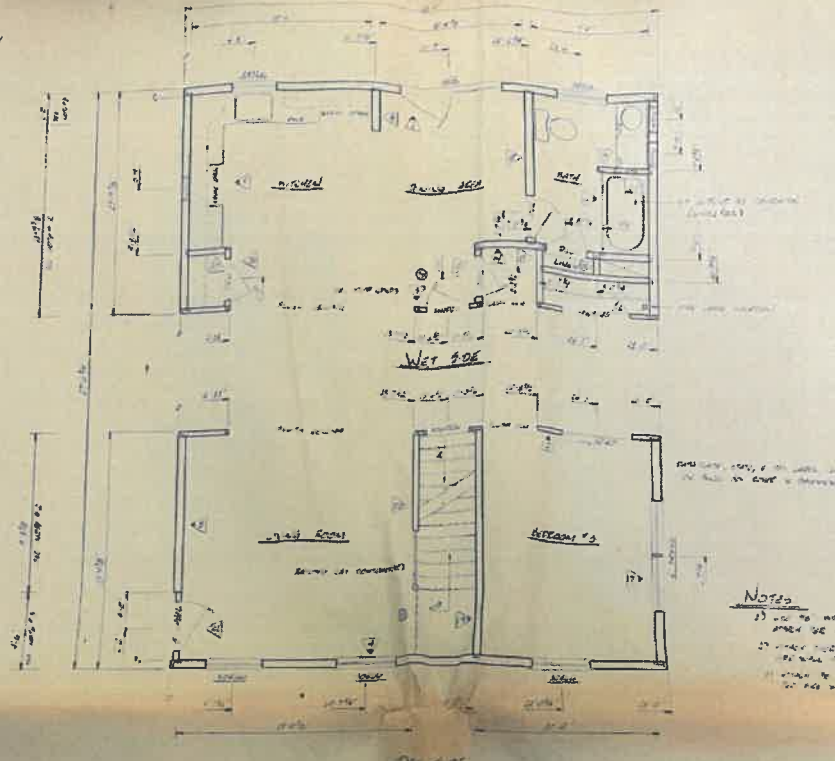
DATE	REVISION	BY	APPRO



KEY-LOC HOMES

PO BOX 826
 SUNDON, NH 03275

SHEET TITLE: CAPE DURE 2000'S FIRST FLOOR PLAN	SCALE: 1/8" = 1'-0"	SHEET NO. 2B
DRAWN BY: J. WENNER	DATE: 1-1-89	APPROVED BY: [Signature]
DATE:	DRAWING NO. 88109 MA	



Notes
 1) DO NOT MOVE A WINDOW OR DOOR UNLESS SPECIFIED BY THE ARCHITECT.
 2) DO NOT REMOVE ANY WALLS UNLESS SPECIFIED BY THE ARCHITECT.
 3) ALL DOOR AND WINDOW SCHEDULES ARE TO BE USED UNLESS OTHERWISE NOTED.

INTERIOR FINISHES-LIGHT & VENT					EXTERIOR FINISHES				WINDOW / DOOR SCHEDULE					WALL SCHEDULE					
ROOM	FLOORS	WALLS	AREA	LIGHT	VENT	ITEM	MATERIAL	COLOR	REMARKS	WINDOW NO.	TYPE	MATERIAL	R.O.	SUB-ASSY	NO.	SIZE	REMARKS		
LIVING RM.			170	11"	12"	SIDING				112	DBL HUNG	WOOD	1-4" x 4-1/2"	2-1/2"	1	12-0"	2-1/2"		
DINING RM.						SHUTTERS			STD. ON FRONT ONLY	113	DBL HUNG	WOOD	1-4" x 4-1/2"	2-1/2"	2	12-0"	2-1/2"		
COVER						ROOFING				114	DBL HUNG	WOOD	1-4" x 4-1/2"	2-1/2"	3	12-0"	2-1/2"		
HALL						8" GABLE END OVERHANGS													
WSTR. BDRM			215	11"	12"	HEAT													
BEDROOM 2			215	11"	12"	ELECTRIC BASEBOARD													
BEDROOM 3			180	11"	12"	NO HEAT													
BEDROOM 4						OPT. 20" x 20" CHIMNEY FRAMING													
KITCHEN						FINELACE FRAMING													
MAIN BATH						ELECTRICAL													
WSTR. BATH						PLUMBING													
* ROOMS W/MECH LIGHT & VENT NOT INCLUDED						KITCHEN AND BATHROOMS				P. F. S. CORPORATION									
ROOM						DEALER: P.F.S. BLDG. CO.				Plans certified to comply with all applicable codes and regulations of MA. BLDG. CODES 2 B, 1989									
KITCHEN						SALES NO. 28101				R. WENNER STAFF ENG.									
MAIN BATH						TURNKEY BUYER				Date									
WSTR. BATH						HOUSE NUMBER 88109MA				Title									
INTERIOR OPTIONS						REVISIONS				KEY-LOC HOMES					SHEET TITLE				
<input type="checkbox"/> DELUX. MED. CAB. <input type="checkbox"/> TUB ENCL. <input type="checkbox"/> SHOWER ENCL. <input type="checkbox"/> 6 PANEL DOORS <input type="checkbox"/> OPENING FOR DISHWASHER <input type="checkbox"/> RANGE HOOD, COLOR <input type="checkbox"/> EXTRA WALLPAPER <input type="checkbox"/> BUILT IN VACUUM SYSTEM						DATE	REVISION	BY	APPRO	P.O. BOX 228 SUNCOCK, NH 03270					LIFE DESIGN '88 DE #1 1st FLOOR PLAN				
										DRAWN BY: J. GORDON					SCALE: 1/4" = 1'-0"				
										DATE: 1-15-89					SHEET NO.				
										APPROVED BY:					DRAWING NO.: 88109MA				
										DATE:					2A				

