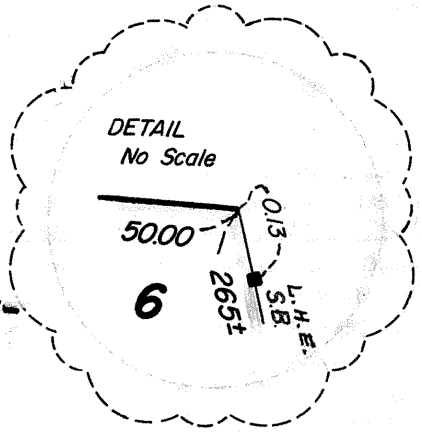
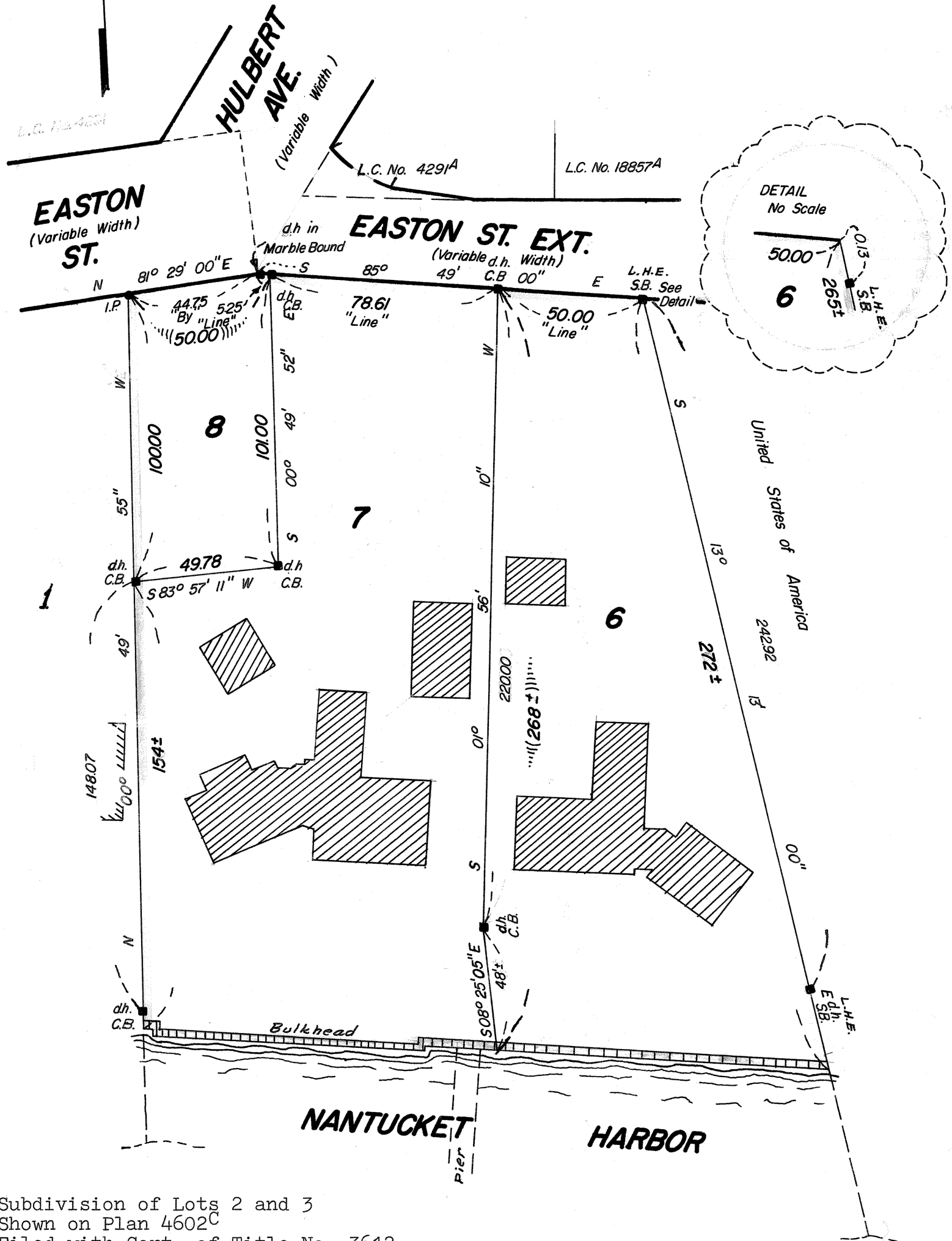
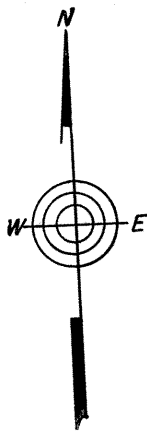


4602^E

SUBDIVISION PLAN OF LAND IN NANTUCKET

John J. Shugrue, Inc., Surveyors

October 29, 1985



THIS PLAN FILED WITH CERTIFICATE NO. 12,452

Subdivision of Lots 2 and 3
Shown on Plan 4602^C
Filed with Cert. of Title No. 3612
Registry District Of Nantucket County

Separate certificates of title may be issued for land
shown hereon as **Lots 6, 7 & 8**
By the Court.

Charles Comby J
Recorder.

MAY 13, 1986
VJM

Abutters are shown as
on original decree plan.

Copy of part of plan
filed in
LAND REGISTRATION OFFICE
FEB 10, 1986
Scale of this plan 40 feet to an inch
Louis A. Moore, Engineer for Court

Nantucket Registry District
MAY 16 1986

RECEIVED FOR REGISTRATION
11 O'CLOCK 55 m. A.M.

THIS PLAN FILED WITH CERTIFICATE NO. 12,450

Attest Sandra M. Chadwick
Assistant Recorder

LOT 7 ON PLAN No. 4602-E FILED
WITH CERTIFICATE No. 12450 HAS
BEEN Subdivided AND PLAN No. 4602-G
SHOWING SUCH CHANGES IS FILED WITH
CERTIFICATE NO. 12177
FURTHER CERTIFICATES FOR SAID LOT 7
ON SAID EARLIER PLAN WILL
NOT BE ISSUED UNLESS AUTHORIZED BY
THE COURT. (NOW LOTS 11+12)