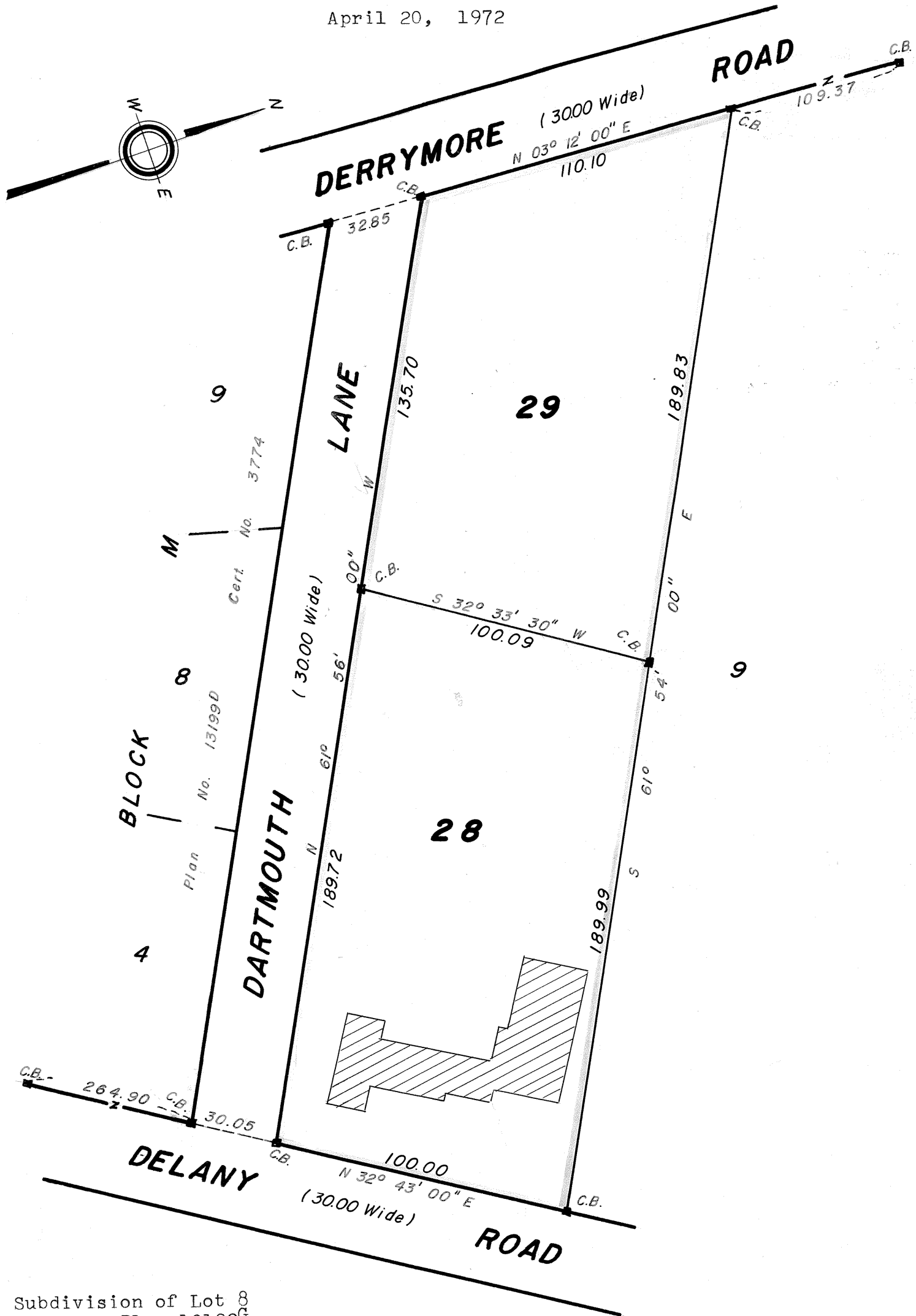


SUBDIVISION PLAN OF LAND IN NANTUCKET

Josiah S. Barrett, Surveyor

April 20, 1972

13199M



Subdivision of Lot 8
Shown on Plan 13199G
Filed with Cert. of Title No. 4127
Registry District of Nantucket County

Separate certificates of title may be issued for land
shown hereon as Lots 28 and 29
By the Court.

JUNE 28, 1972

M66

Margaret M. Daly
Recorder

Copy of part of plan
filed in
LAND REGISTRATION OFFICE
JUNE 28, 1972
Scale of this plan 40 feet to an inch
R.L. Woodbury, Engineer for Court

This plan filed with Certificate No. 4127