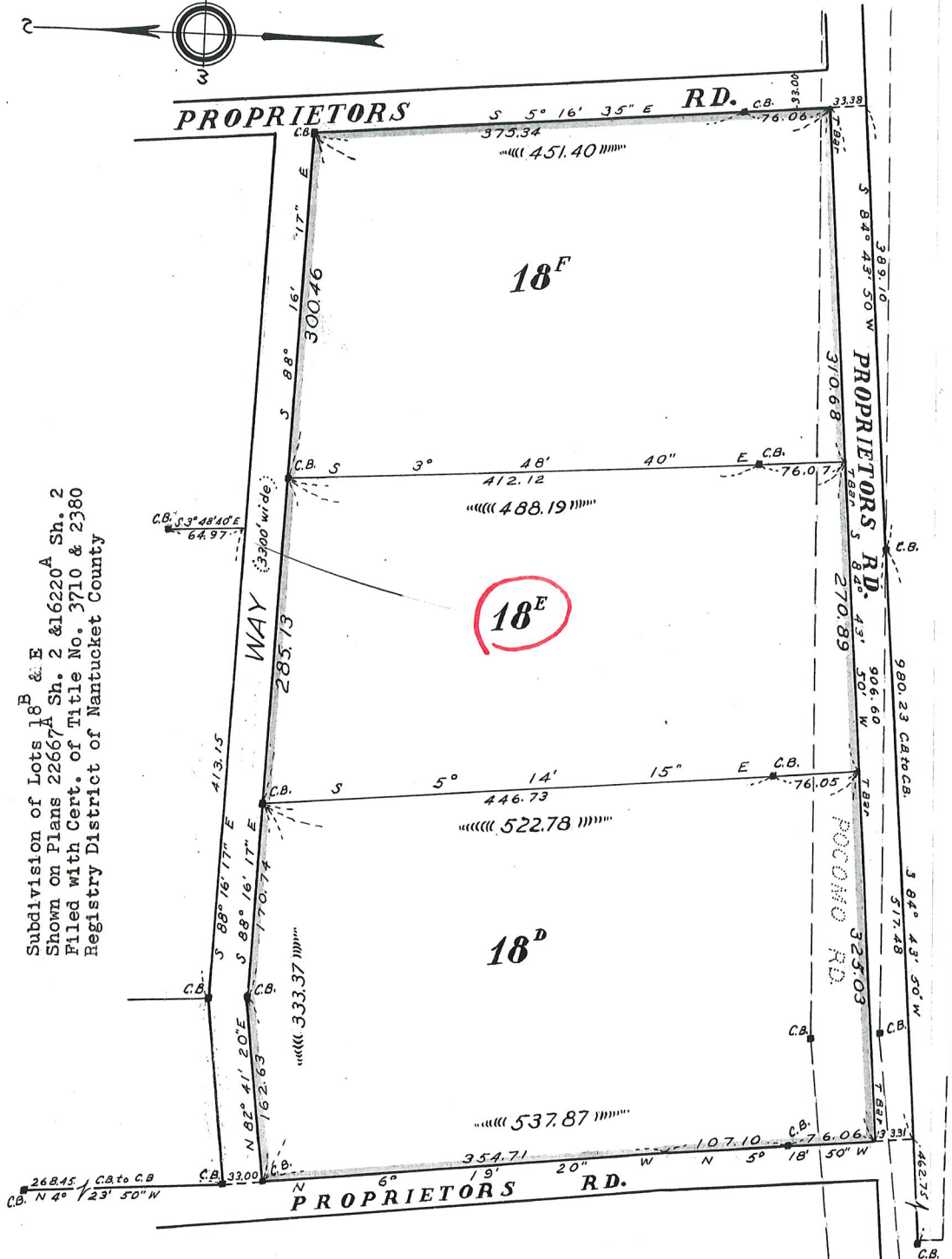
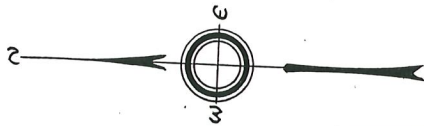


SUBDIVISION PLAN OF LAND IN NANTUCKET  
Schofield Brothers, Civil Engineers  
September 1955

22667 C



Subdivision of Lots 18<sup>B</sup> & E  
Shown on Plans 22667<sup>A</sup> Sh. 2 & 16220<sup>A</sup> Sh. 2  
Filed with Cert. of Title No. 3710 & 2380  
Registry District of Nantucket County

This plan filed with Certificate No. 3958

Separate certificates of title may be issued for land shown hereon as Lots 18<sup>B</sup>, 18<sup>E</sup> & 18<sup>D</sup> by the Court.

*Thomas B. Cummings*  
County Recorder

6 OCT. 14, 1955

Copy of part of plan filed in  
LAND REGISTRATION OFFICE  
OCT. 14, 1955  
Scale of this plan 1/100 feet to an inch  
C.M. Anderson, Engineer for Court v.l.